



## Overview of the College's Financial Resources

Part I: College Financial Plan  
Part II: All Funds Data

**FYE 2015-2016**

*Prepared by the Division of Business & Finance*



# **College Financial Plan**

## **FYE 2015-2016**

### **Part I**

---

---

**College Financial Plan by:**

Division

---

Expenditures

---

OTPS

---

Recharges

---

Funding Sources

---

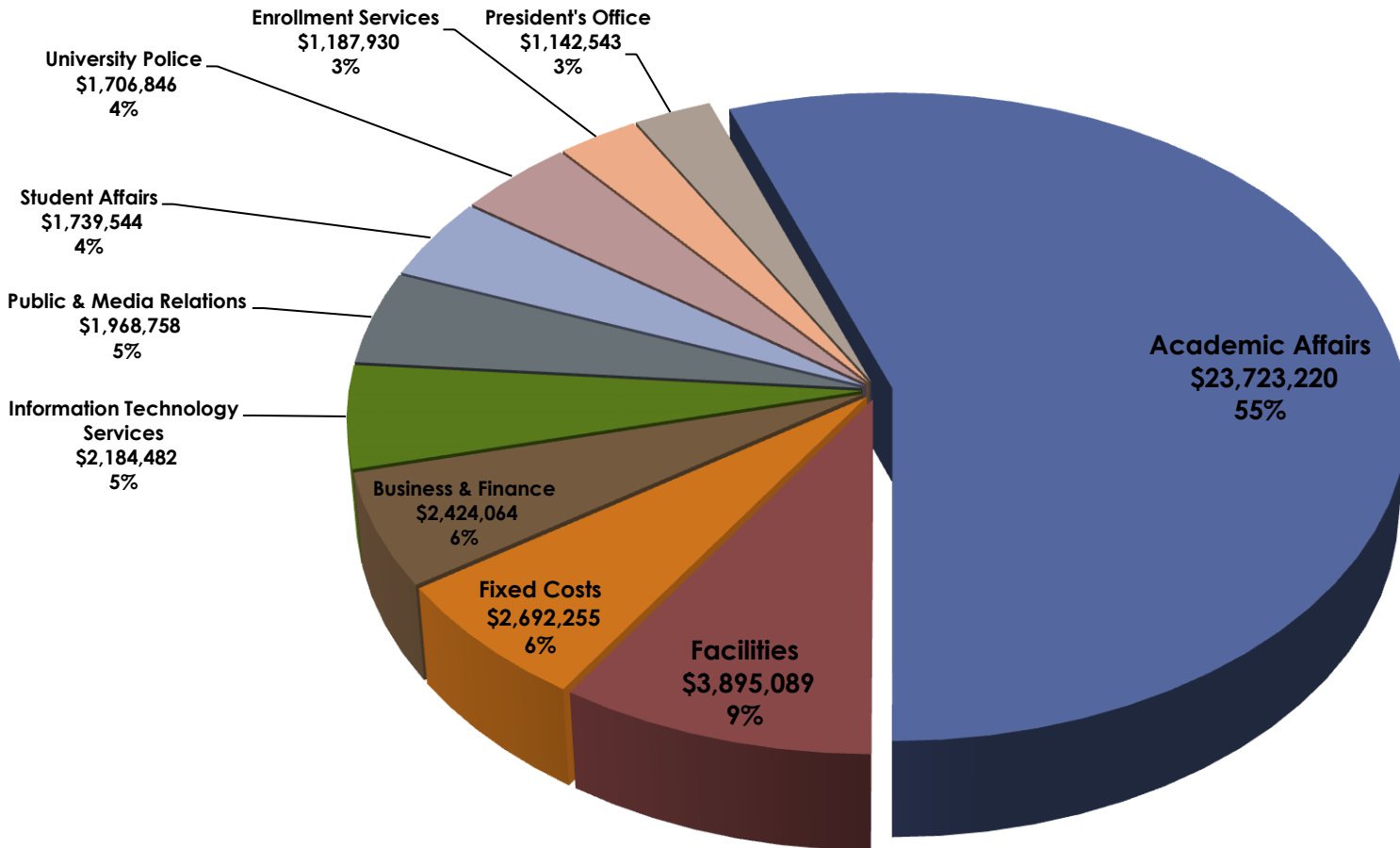
---

**DIFR Financial Plan by Division**

---

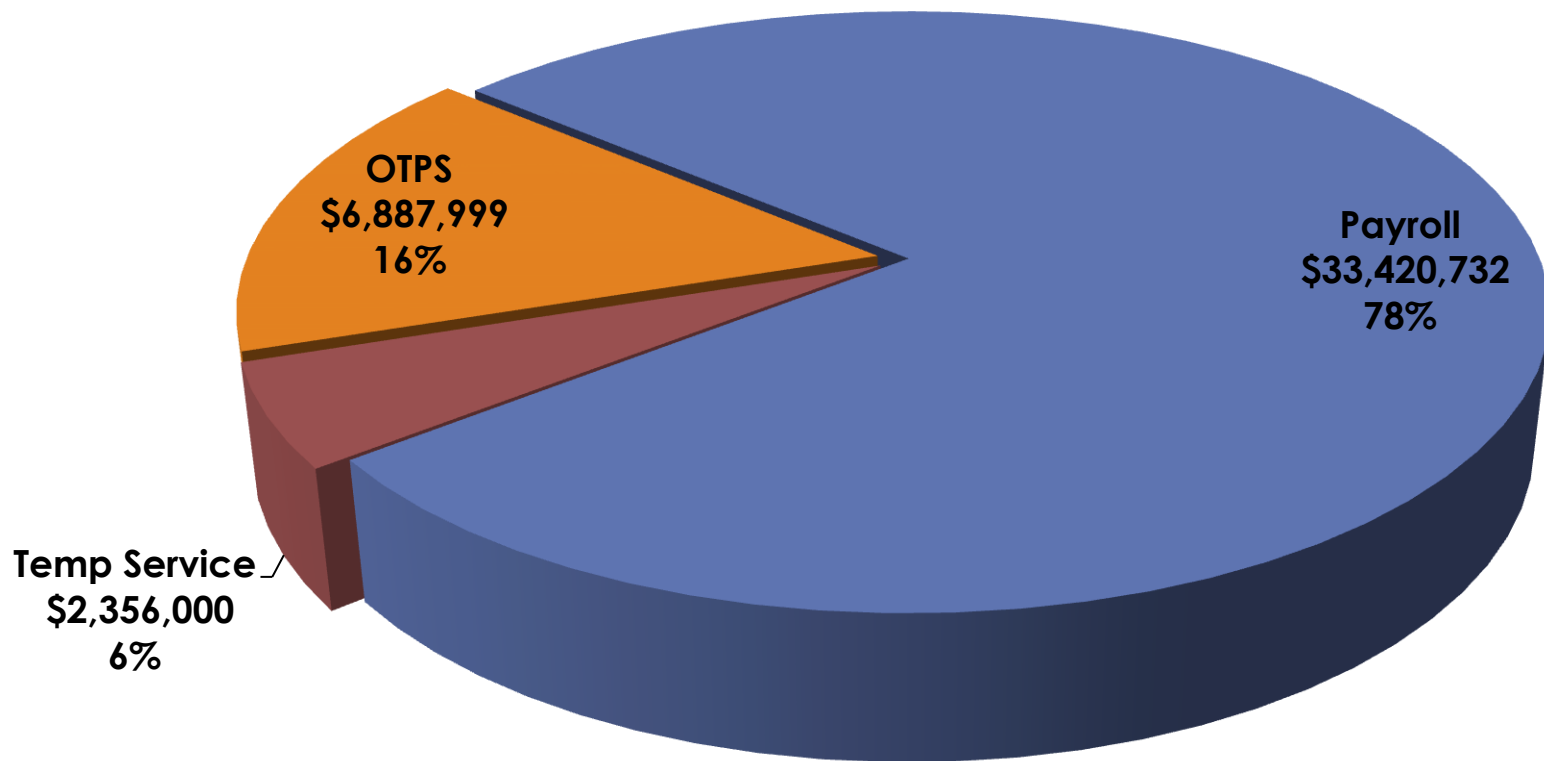
**IFR Financial Plan by Division**

# College Financial Plan by Division FYE 2015-2016



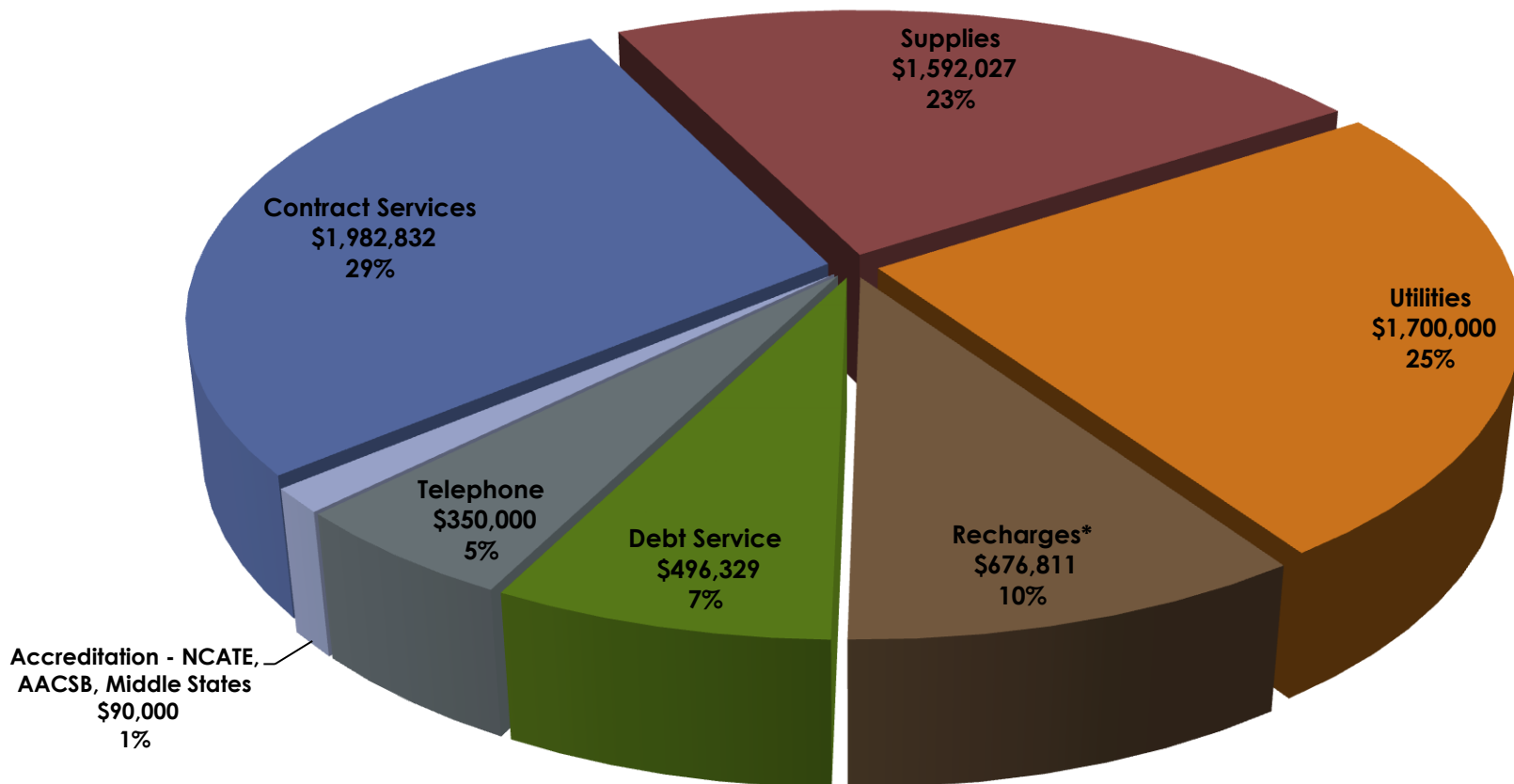
**Total = \$42,664,731**

# College Financial Plan: Expenditures by Object FYE 2015 – 2016



**Total = \$42,664,731**

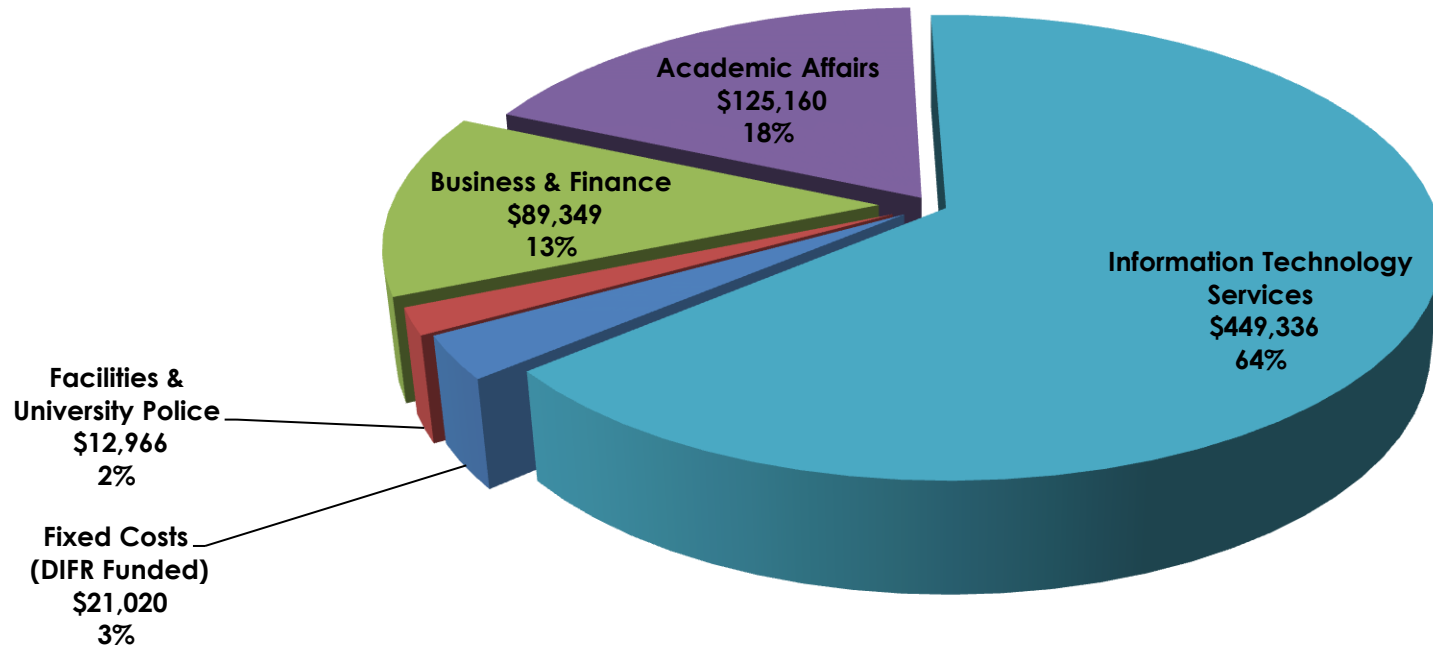
# College Financial Plan – OTPS FYE 2015 – 2016



**Total = \$6,887,999**

\*Recharges: Excludes \$21,020 Fixed Costs DIFR Funded Recharges

# College Financial Plan Recharges by Division FYE 2015 – 2016

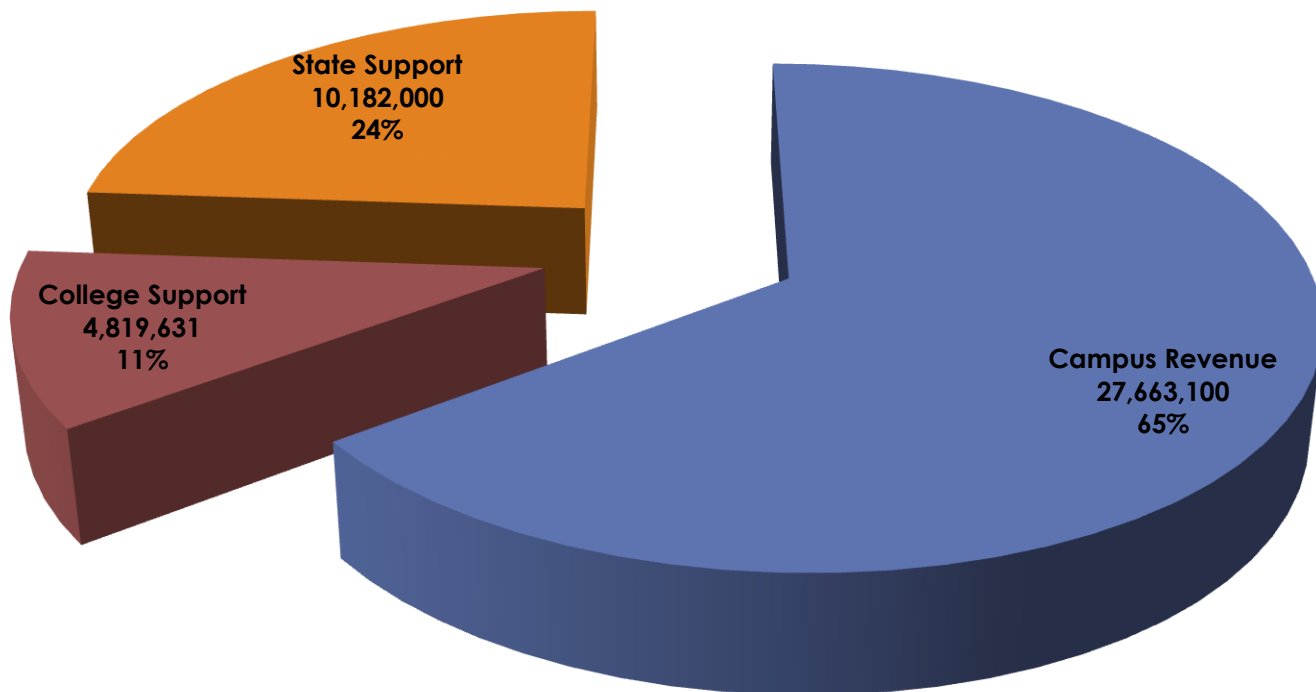


**Total = \$697,831**

(Details Shown on Next Slide)

		Amount	Purpose & Basis	FP – 5
Academic Affairs	Library/ Elsevier/ LAIP	\$ 111,020	Resource sharing among campuses/ Online Journals Basis: Per Senator	
	Faculty Senate (840724)	\$ 4,000	Operations Support Basis: Enrollment	
	Malpractice Insurance (840820)	\$ 3,022	Clinical Training Program Injury Basis: AAFT/ Vendor Costs	
	HIPPA (840885)	\$ 3,218	Compliance Support Basis: Equality Among Campuses	
	Music LIC Royalty (840827)	\$ 3,900	Radio Station Usage Basis: Fall Student Headcount	
		\$ 125,160		
Business & Finance	Hope Scholarship (840515)	\$ 4,300	Federal Form 1098T Reporting Basis: Setup Charge/ Per Form	
	Multiple Interveners (840641)	\$ 1,538	Membership in Rate Cases Basis: Electric/ Natural Gas Costs	
	Master Fidelity Bond (840828)	\$ 227	OGS Insurance Basis: Filled Positions	
	GAAP Program (840831)	\$ 7,884	EDP Services Basis: Campus Funding Levels	
	Overseas Liability Insurance	\$ 1,800	Overseas Students Basis: Overseas Enrollment	
	Campus Assessments	\$ 73,600		
		\$ 89,349		
Information Technology Services	Oracle (840822)	\$ 25,584	Software Platform Basis: Various	
	ITEC Admin Technology (840823)	\$ 282,789	Memberships for Software Products Basis: Various	
	VM Ware (840825)	\$ 16,400	Memberships for Software Products Basis: Various	
	SUNY Training Center (840826)	\$ 6,500	University Wide Initiatives Training Basis: \$5,000 Flat Fee; \$1,500 Fixed Fee	
	SICAS Center At Oneonta (840833)	\$ 111,763	BANNER Software Membership Basis: Maintenance Charges	
	Ellucian Mobile (850480)	\$ 6,300		
		\$ 449,336		
Facilities, Personnel, and University Police	HRMS (840817)	\$ 1,726	Maintenance Support Basis: Campus Funding Levels	
	Prop Control (840871)	\$ 498	Conversion Costs Basis: Campus Funding Levels	
	Time Attend (840872)	\$ 1,720	Maintenance Support Basis: Campus Funding Levels	
	Postage/ W-2 (840805)	\$ 512		
	Buffalo Valley Enterprise Group (840873)	\$ 1,776	Cost of Consultant for Natural Gas Bids, Contacts, etc. Basis: Campus Funding Levels	
	Energy Management Budget Systems	\$ 4,109	Software Package for System Wide Tracking Basis: Proportionately Based on Electricity Usage	
	University Police Training (840638)	\$ 2,625	Various Training Levels Basis: \$140 per Officer	
		\$ 12,966		
Fixed Costs	DIFR Overhead - Residence Hall Assessments (870954)	\$ 17,020	Charged to DIFR Funding	
	Capital Program Manager (840805)	\$ 4,000		
		\$ 21,020		
Total Recharges		\$ 697,831		

# College Financial Plan Funding Sources FYE 2015 – 2016



**Total = \$42,664,731**





# All Funds Data

## FYE 2015 – 2016

### Part II

#### College All Funds Budget

#### Special Revenue Funds Budget

IFR Operating Budget

DIFR Operating Budget

DIFR Non-Operating Budget

SUTRA & Other Funds Budget

#### Temporary Allocation

#### Affiliated Entities

#### All Funds by:

Object

Payroll

Temporary Service

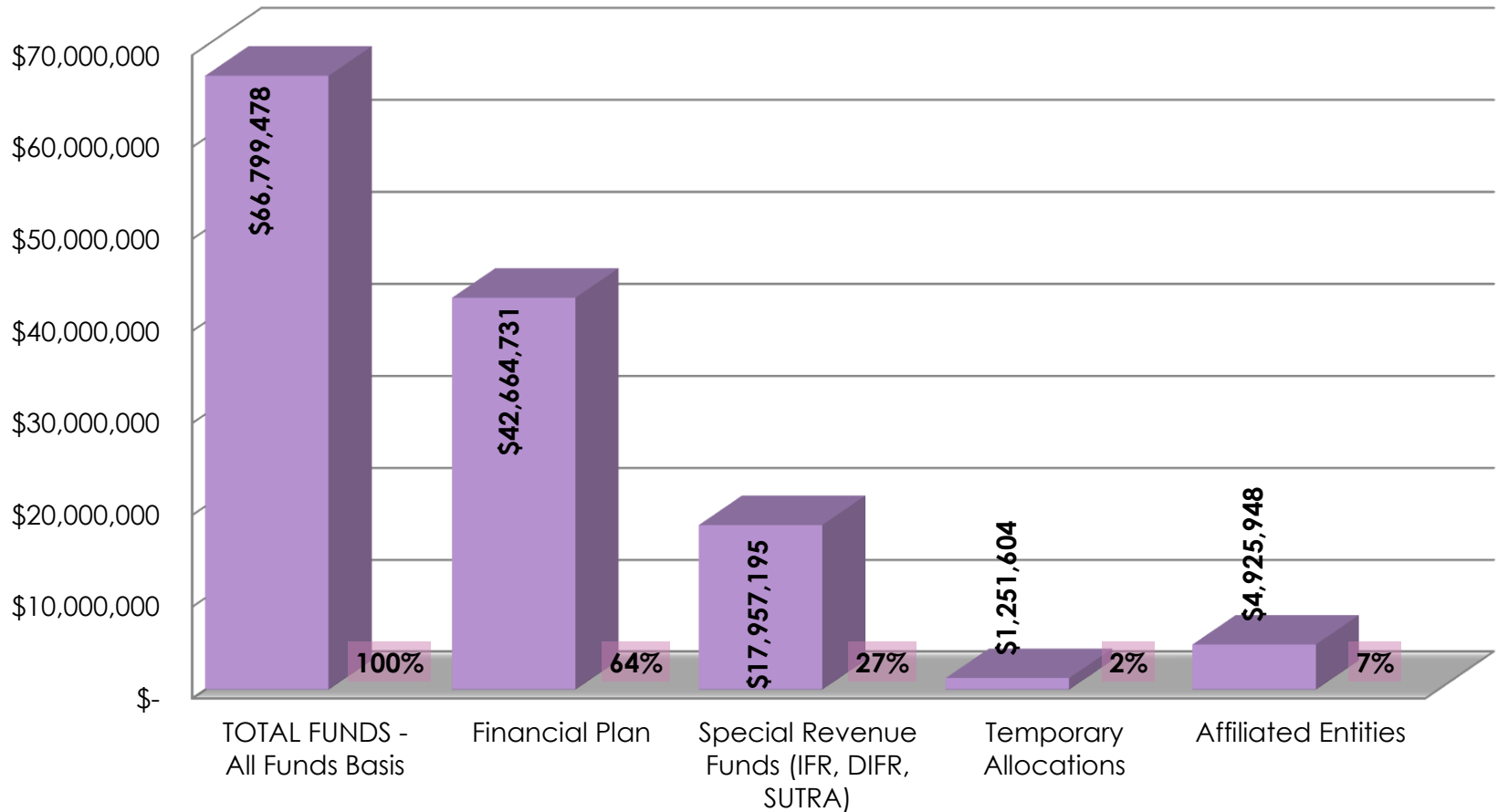
OTPS

Fixed Cost

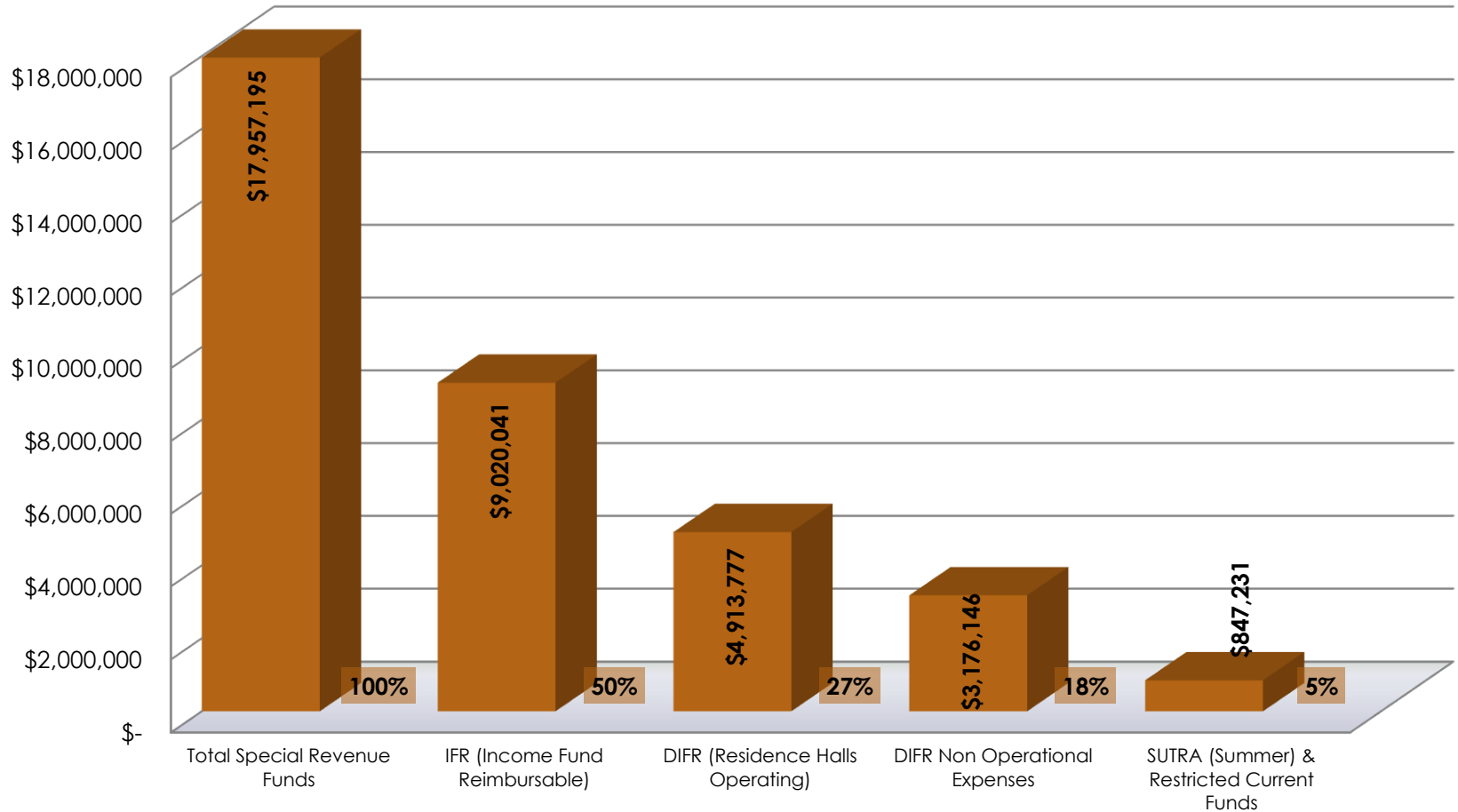
Other Items

#### FTE by Division

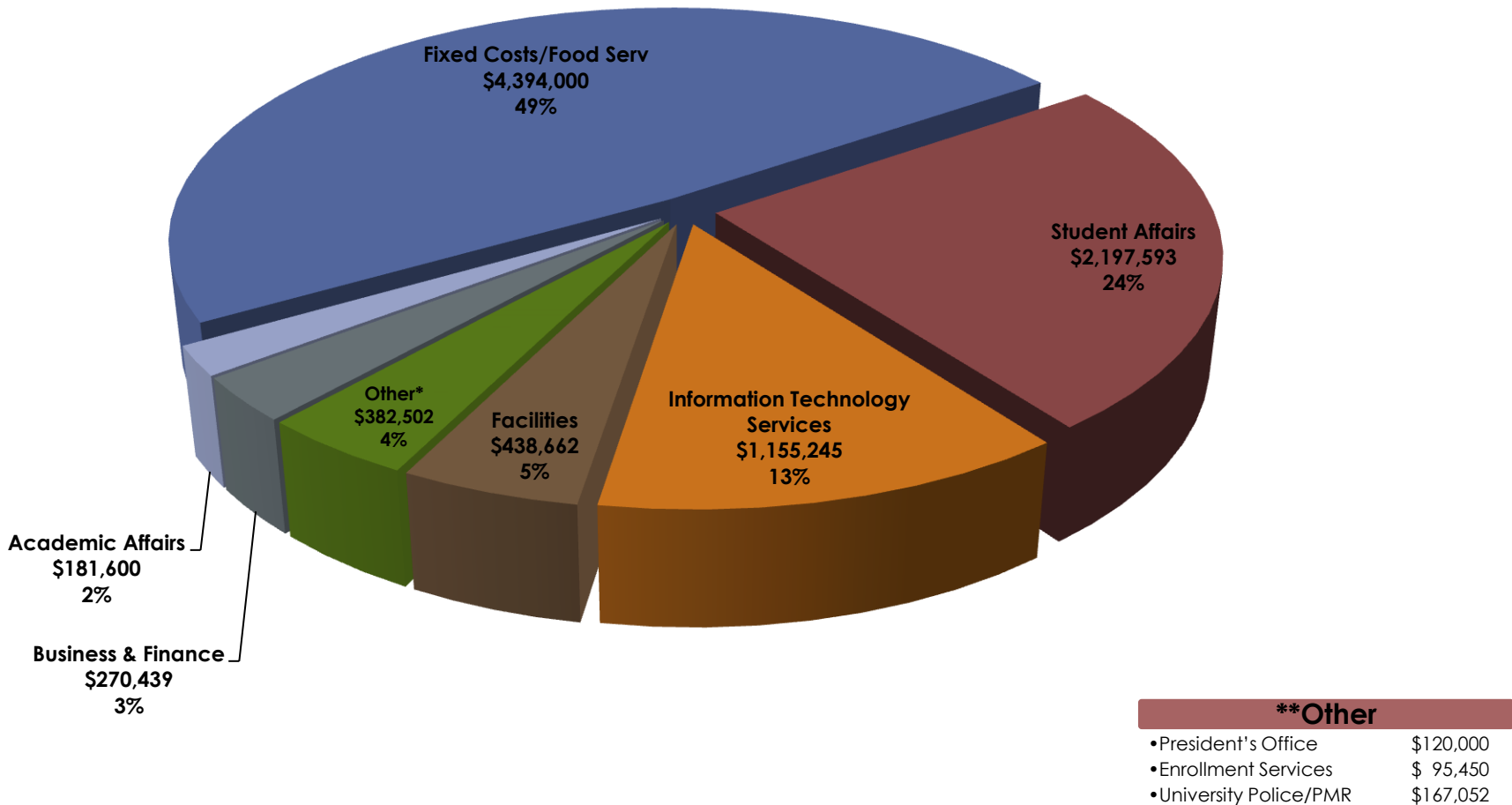
# College All Funds Budget FYE 2015 - 2016



# Special Revenue Funds Budget FYE 2015 – 2016

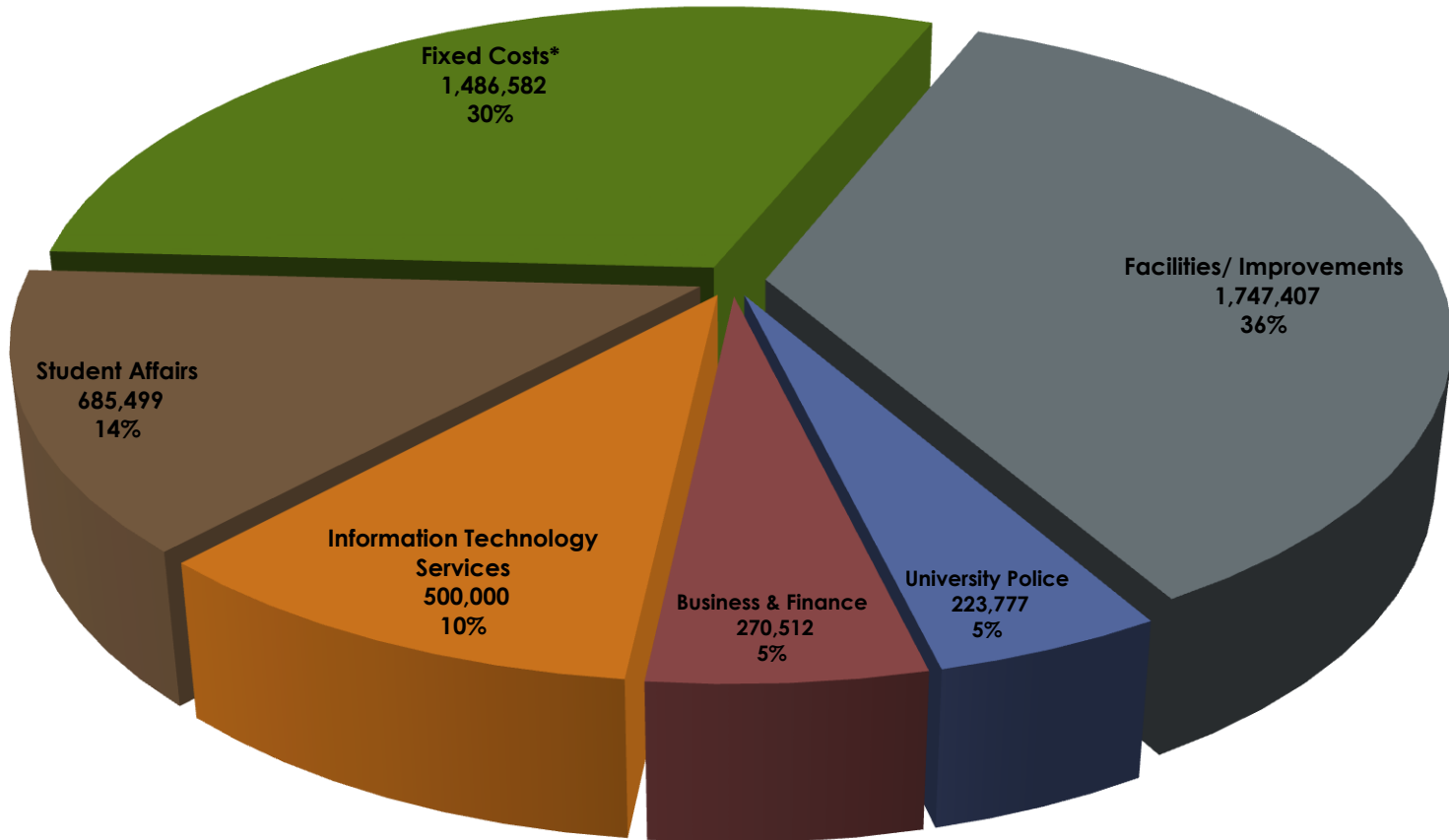


# IFR Operating Budget FYE 2015 – 2016



**Total = \$9,020,041**

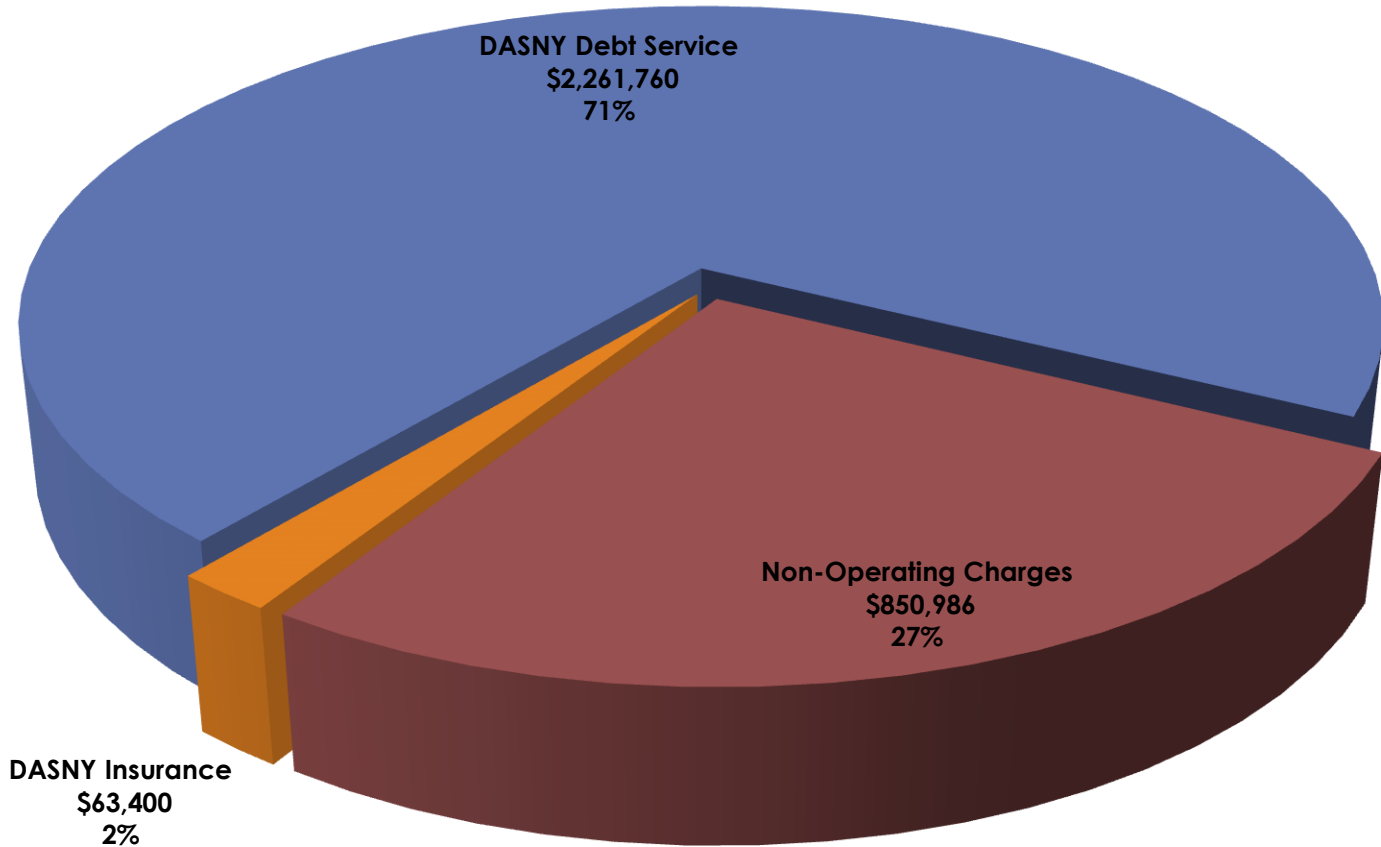
# DIFR Operating Budget FYE 2015 – 2016



**Total = \$4,913,777**

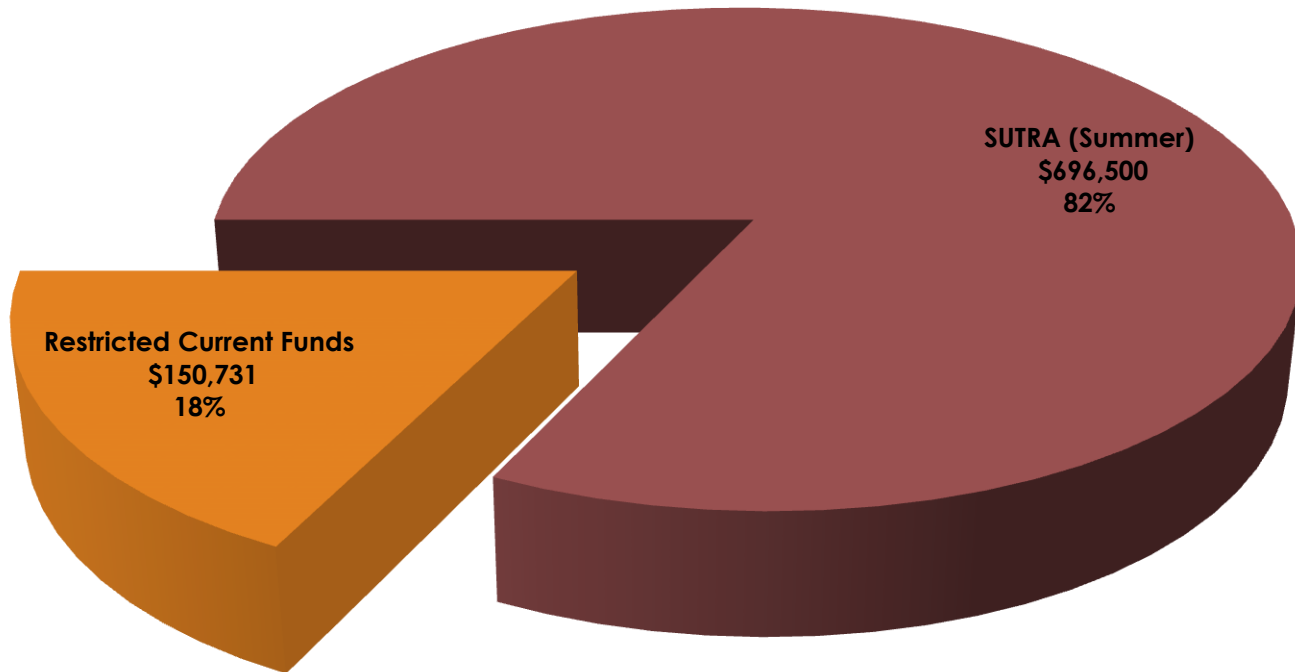
\*Fixed Costs: Includes \$21,020 Mandatory Recharges

# DIFR Non-Operating Budget FYE 2015 - 2016



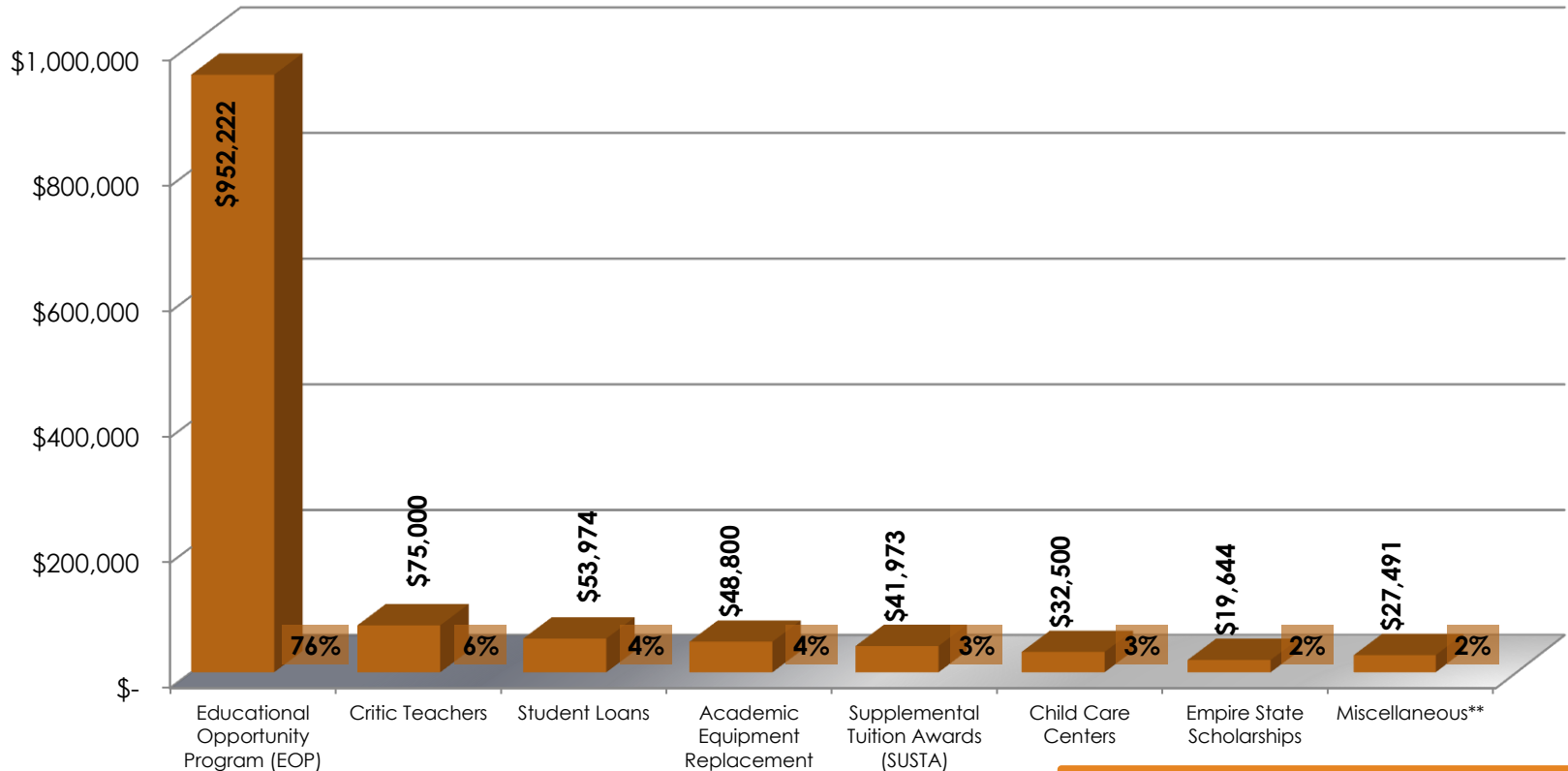
**Total = \$3,176,146**

# SUTRA & Other Funds Budget FYE 2015 – 2016



**Total = \$847,231**

# Temporary Allocations FYE 2016



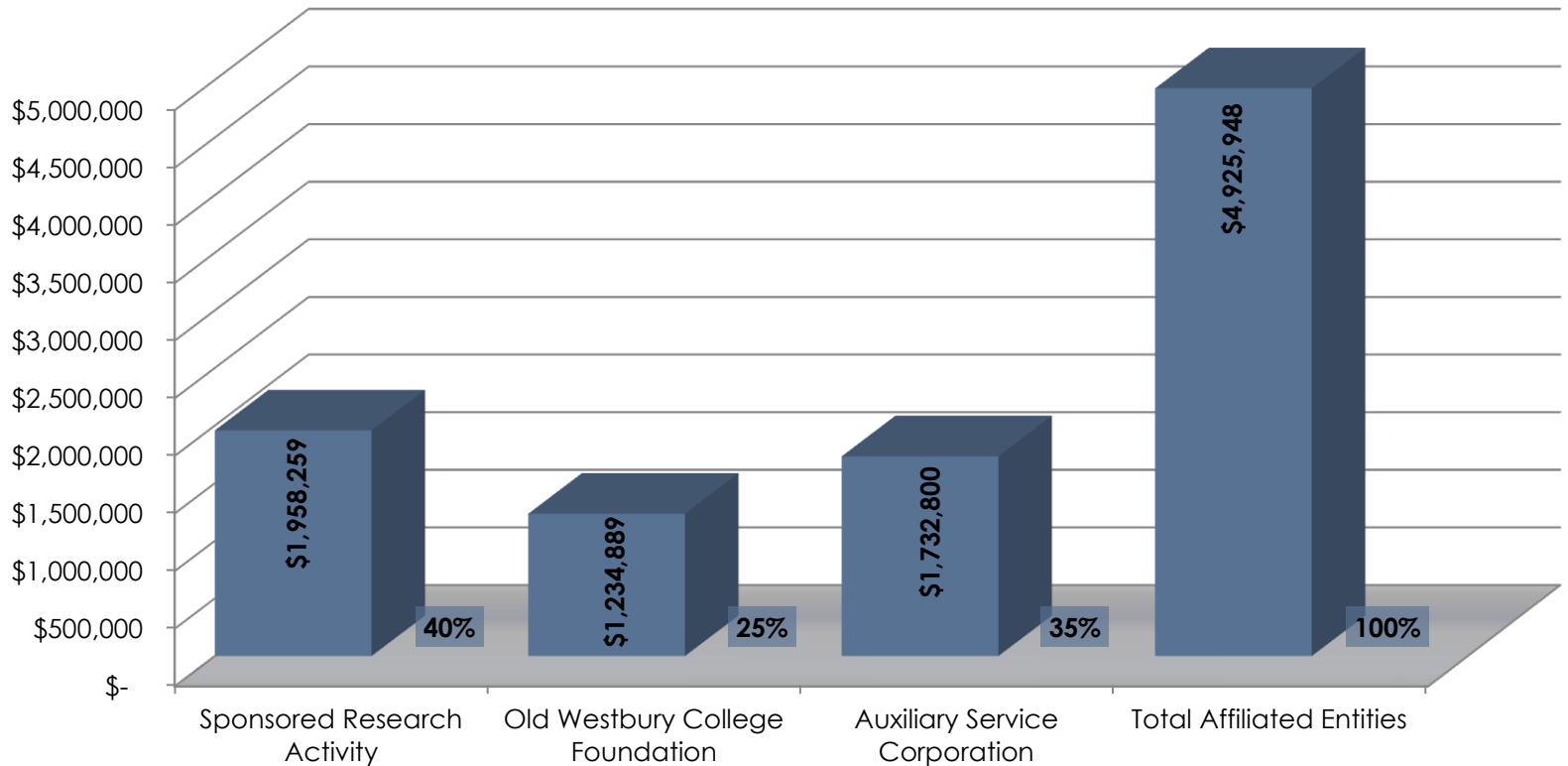
## \*\*Miscellaneous

• Media Lab Project	\$10,000
• Under-represented/Grad Fellowships	\$9,487
• Disabled Student Support	\$4,504
• Employee & Graduate Waivers	\$3,500

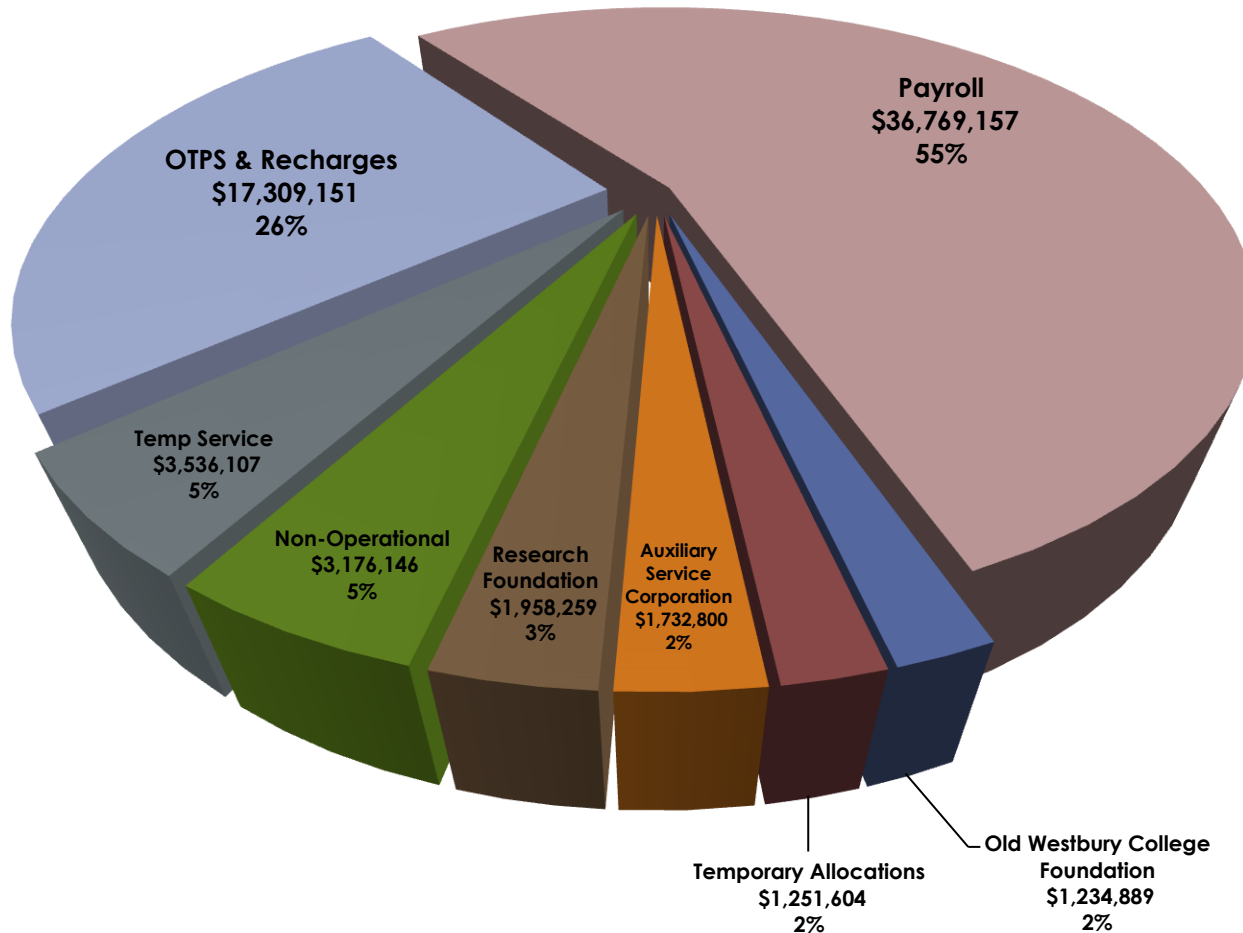
**Total Temporary Allocations = \$1,251,604**



# Affiliated Entities FYE 2016

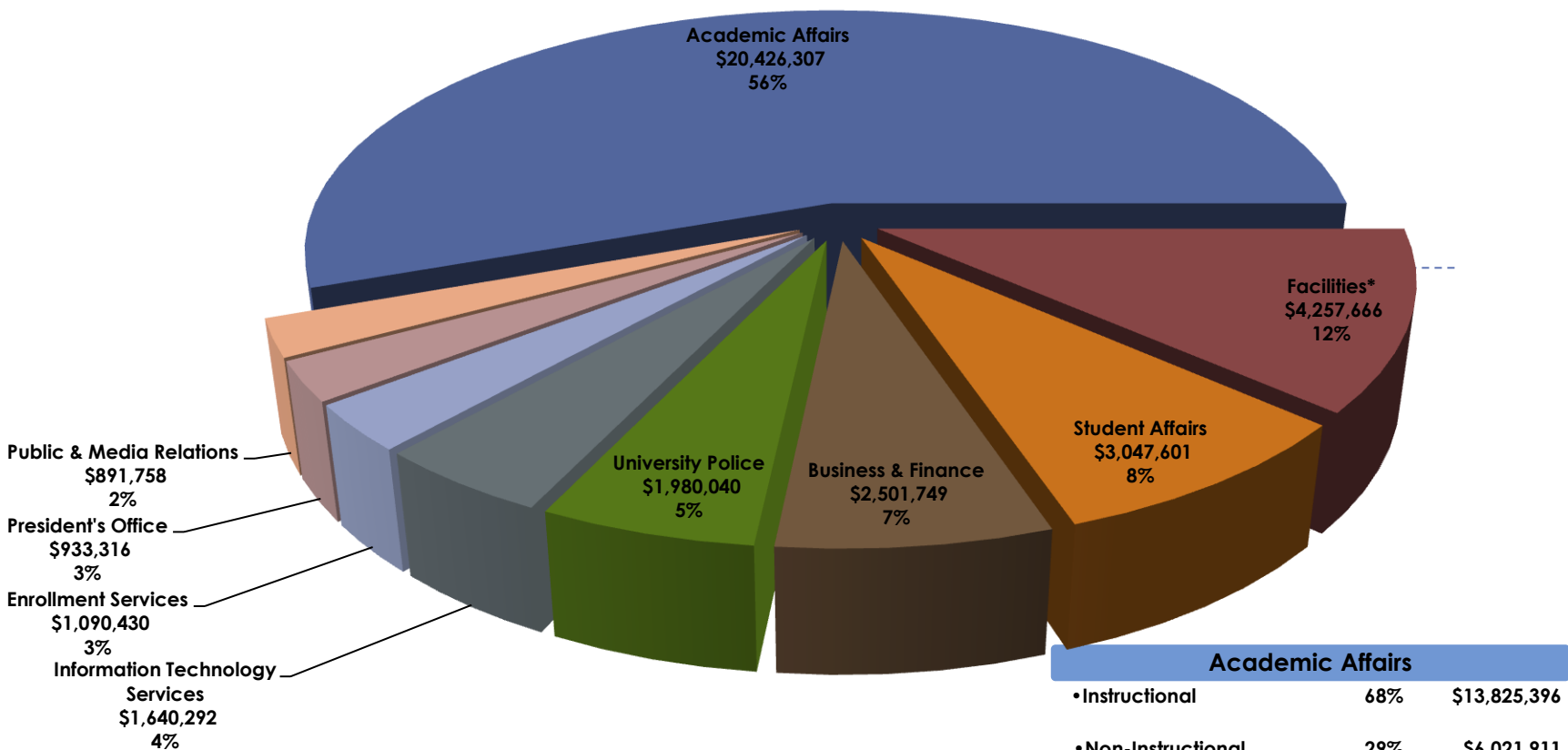


# All Funds by Object FYE 2015 – 2016



**Total = \$66,968,113**

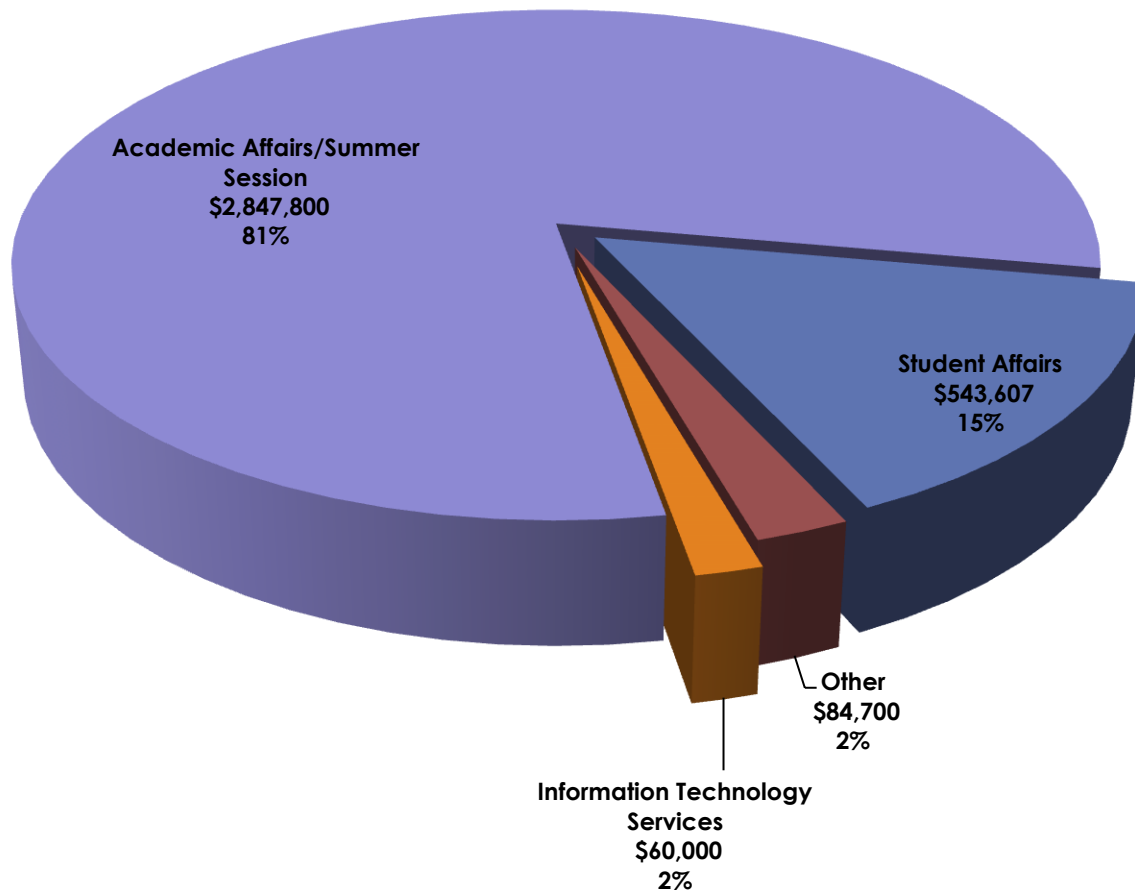
# All Funds Payroll FYE 2015 - 2016



**Total = \$36,769,157**

\*Facilities: Includes \$90,562 Allocation for ongoing projects. Additional OT

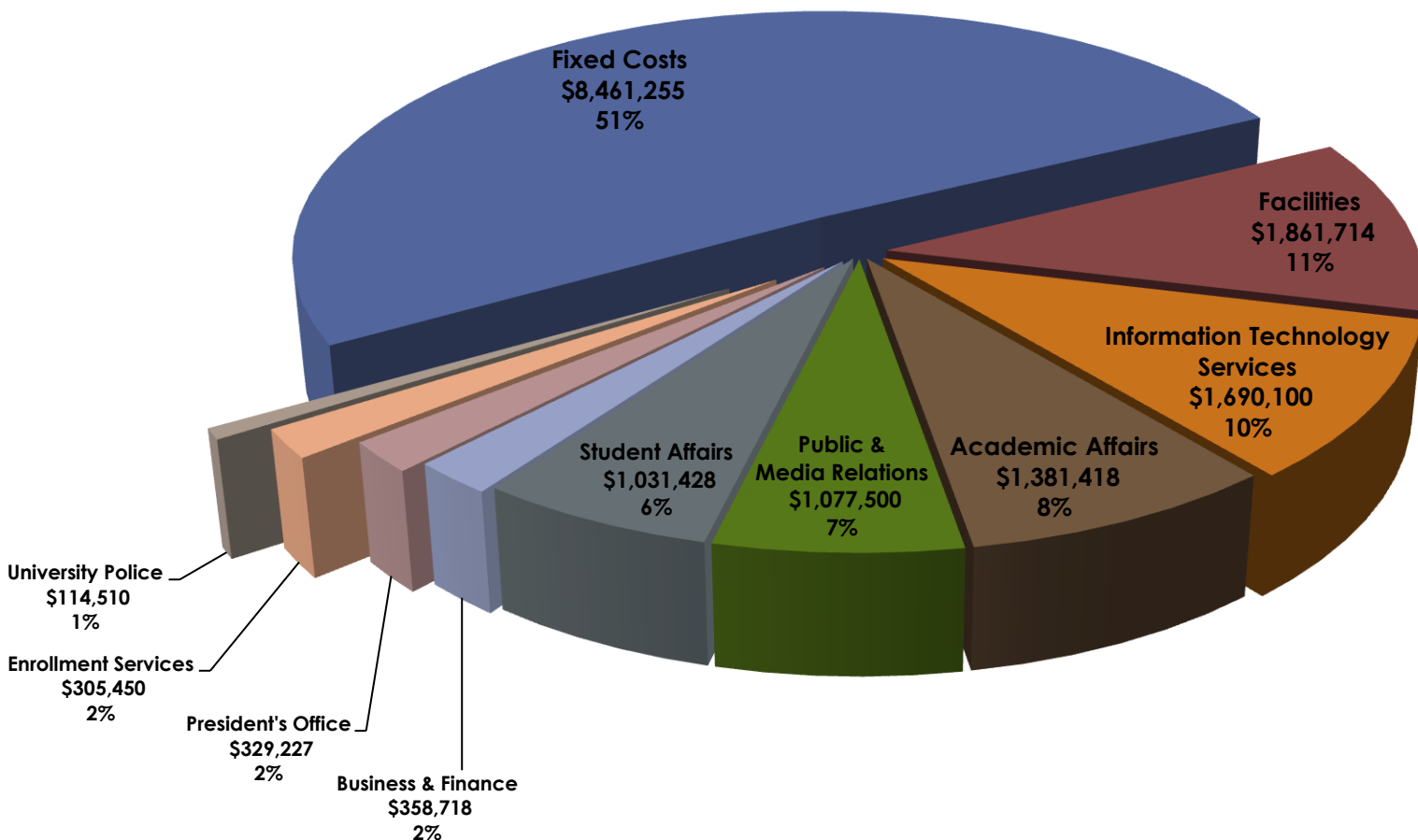
# All Funds Temp Service FYE 2015 - 2016



Other	
• Enrollment Services	\$27,500
• Business & Finance	\$15,200
• Facilities	\$42,000

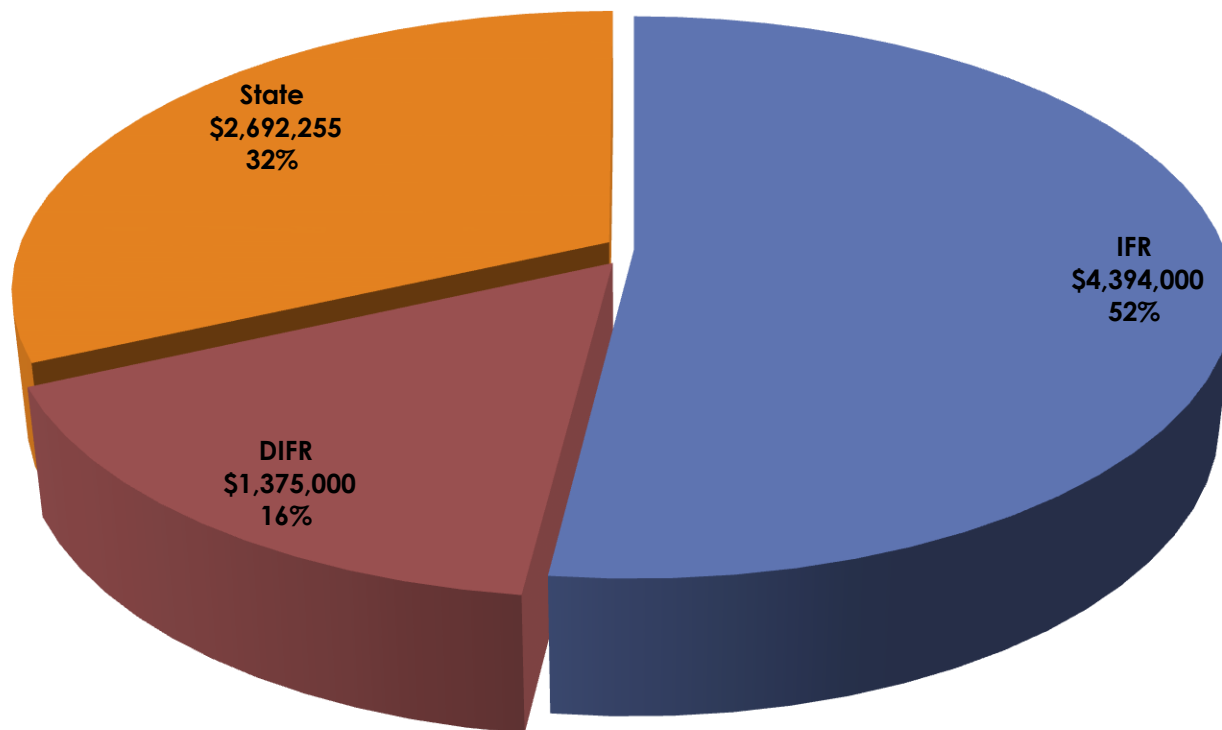
Total = \$3,536,107

# All Funds OTPS by Division FYE 2015 - 2016



**Total = \$16,611,320**

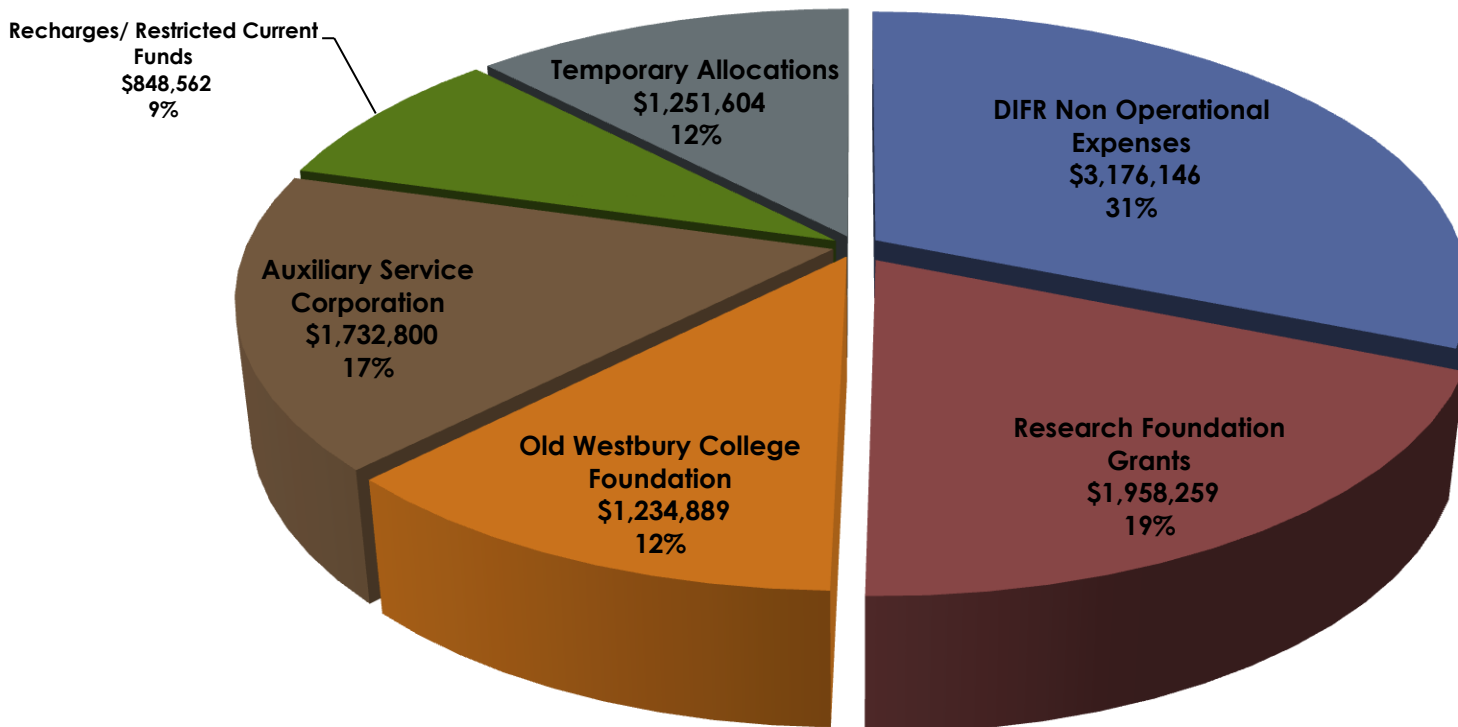
# All Funds Fixed Costs FYE 2015 - 2016



**Total = \$8,461,255**

\*Fixed Costs: Includes \$90,562 allocation in Facilities for ongoing projects.

# All Funds Other Items FYE 2015 – 2016

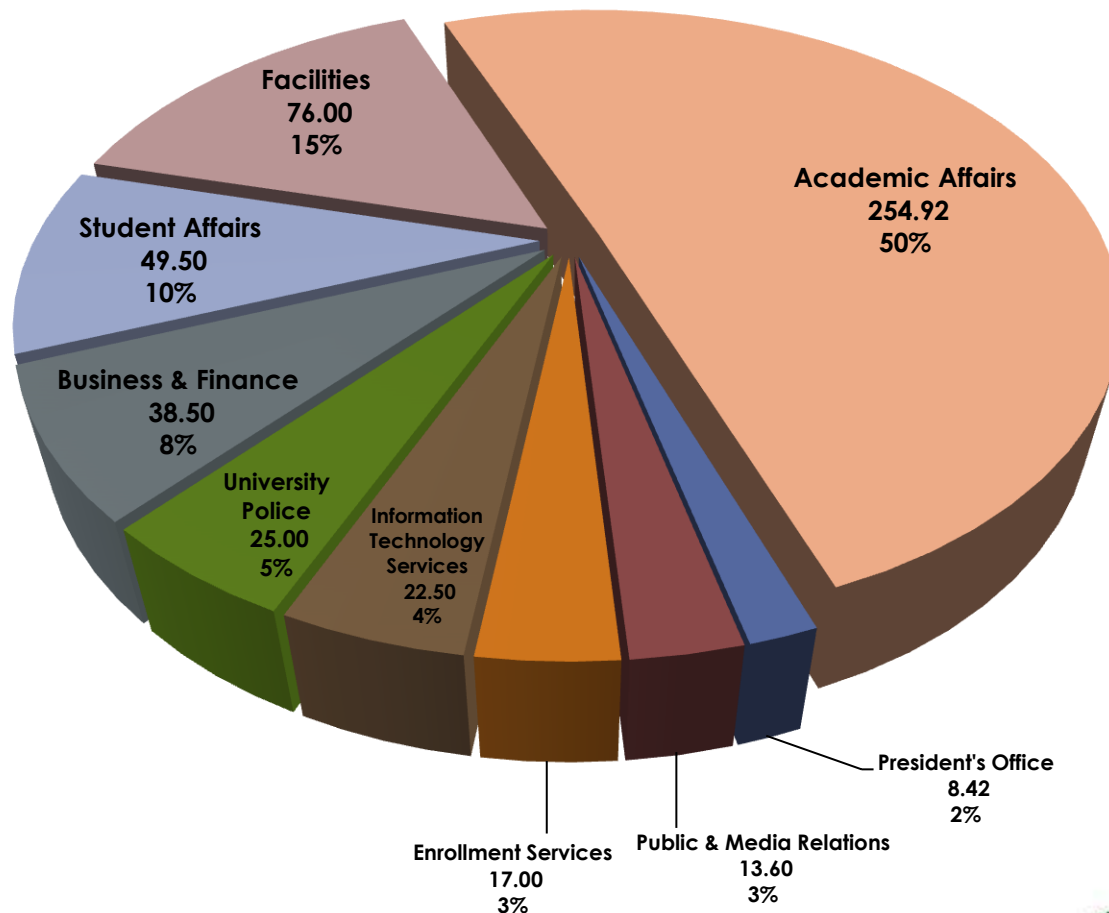


**Total = \$10,202,260**

# All Funds FTE by Division FYE 2015 – 2016

## Academic Affairs

• Instructional	157.81
62%	
• Non-Instructional	89.61
35%	
• Strategic Plan Instructional	7.50
3%	



## Total 505.44

• State	90%	453.24
• DIFR	4%	20.50
• IFR	6%	31.70





---

# Division of Business & Finance

---

## Office of Budget

---

Faluk Barlas

*Budget Analyst*

---

Jennifer Jimenez

*Budget Director*

---

Pat Louis Lettini

*Associate Vice President for  
Business Affairs and Controller*

---

Len L. Davis

*Senior Vice President  
and Chief Financial Officer*

---

**Campus Center – H Wing – 3rd Floor**